

© 1967 TECHLIT CO.
All rights reserved.
Printed in U.S.A.

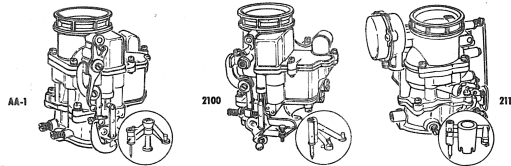
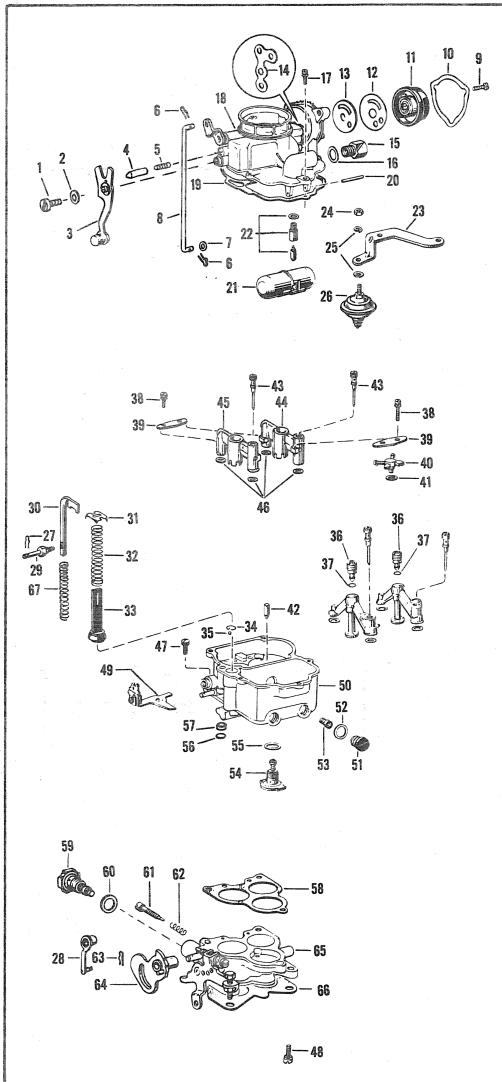
INSTRUCTION SHEET

IS-50-459

HOLLEY CARBURETOR MODELS AA-1, 2100 AND 2110

GENERAL EXPLODED VIEW

THE GENERAL DESIGN AND PARTS SHOWN WILL VARY TO INDIVIDUAL UNITS COVERED ON THIS INSTRUCTION SHEET



DISASSEMBLY

USE EXPLODED VIEW AS A GUIDE. THE NUMERICAL SEQUENCE MAY BE FOLLOWED TO DISASSEMBLE UNIT FAR ENOUGH TO PERMIT CLEANING AND INSPECTION.

NOMENCLATURE

REF. NO.	REF. NO.
1. SCREW-CHOKE LEVER	36. NOZZLE AIR BLEED PLUG(2)
2. WASHER-SCREW CHOKE LEVER	37. GASKET (2)-NOZZLE AIR BLEED PLUG
3. LEVER-CHOKE	38. SCREW (4)-NOZZLE BAR CLAMP
4. PLUNGER-CHOKE LEVER	39. NOZZLE BAR CLAMP (2)
5. SPRING-CHOKE LEVER PLUNGER	40. PUMP DISCHARGE NOZZLE
6. RETAINER (2)-FAST IDLE ROD	41. GASKET-PUMP NOZZLE
7. WASHER	42. NEEDLE-PUMP DISCHARGE
8. ROD-FAST IDLE	43. IDLE TUBE (2)
9. SCREW (3)-STAT COVER RETAINER	44. NOZZLE BAR RH
10. RETAINER-STAT COVER	45. NOZZLE BAR LH
11. STAT COVER	46. GASKET (4)-NOZZLE BAR
12. GASKET-STAT COVER	47. SCREW & LOCKWASHER T/B TO BOWL (2)
13. PLATE-CHOKE BAFFLE	48. SCREW & LOCKWASHER T/B TO BOWL (1)
14. GASKET-CHOKE HOUSING	49. BRACKET-CHOKE CONTROL
15. FITTING-FUEL INLET	50. BOWL ASSY.-FLOAT
16. GASKET-FUEL INLET FITTING	51. PLUG (2)-MAIN JET
17. SCREW (5)-BOWL COVER	52. GASKET (2)-MAIN JET PLUG
18. BOWL COVER ASSY.	53. JET (2)-MAIN
19. GASKET-BOWL COVER	54. ECONOMIZER VALVE ASSY.
20. PIN-FLOAT HINGE	55. GASKET-ECONOMIZER VALVE
21. FLOAT & LEVER ASSY.	56. RETAINER-PUMP ROD FELT
22. NEEDLE, SEAT & GASKET ASSY.	57. FELT-PUMP ROD
23. BRACKET-DASHPOT	58. GASKET-BODY FLANGE
24. NUT-DASHPOT	59. SPARK VALVE
25. LOCKWASHER (2)-DASHPOT	60. GASKET-SPARK VALVE
26. DASHPOT ASSY.	61. NEEDLE (2)-IDLE ADJ.
27. RETAINER-PUMP LINK	62. SPRING (2)-IDLE ADJ. NEEDLE
28. LINK-PUMP	63. RETAINER-FAST IDLE CAM
29. STUD-PUMP LINK	64. CAM-FAST IDLE
30. ROD-PUMP OPERATING	65. THROTTLE BODY ASSY.
31. RETAINER-PUMP SPRING	66. GASKET-FLANGE
32. SPRING-PUMP	67. SPRING-PUMP RETURN
33. PUMP PLUNGER	
34. RETAINER-INLET CHECK BALL	
35. BALL-INLET CHECK	

CLEANING

CLEANING MUST BE DONE WITH CARBURETOR DISASSEMBLED. SOAK PARTS LONG ENOUGH TO SOFTEN AND REMOVE ALL FOREIGN MATERIAL. USE (1) A CARBURETOR CLEANING SOLVENT, (2) LACQUER THINNER OR (3) DENATURED ALCOHOL. MAKE CERTAIN THE THROTTLE BODY IS FREE OF ALL HARD CARBON DEPOSITS. WASH OFF IN SUITABLE SOLVENT. BLOW OUT ALL PASSAGES IN CASTINGS WITH COMPRESSED AIR AND CHECK CAREFULLY TO INSURE THOROUGH CLEANING OF OBSCURE AREAS.

CAUTION: DO NOT SOAK ANY PARTS CONTAINING RUBBER, LEATHER OR PLASTIC IN CLEANING SOLVENT.

REASSEMBLY

REASSEMBLE IN REVERSE ORDER OF DISASSEMBLY. NOTE SPECIAL INSTRUCTIONS AND FOLLOW NUMERICAL OUTLINE IN MAKING ADJUSTMENTS. SEE OTHER SIDE.

SPECIAL INSTRUCTIONS

WHEN INSTALLING IDLE MIXTURE ADJUSTING NEEDLES (61), LIGHTLY BOTTOM THEN BACK OUT 1 1/2 TURNS.

ECONOMIZER VALVE (54). USE CARE WHEN TIGHTENING.

ADJUSTMENT DATA

